

## Quick Installation Guide of WLAN Broadband Router

※ To avoid users without access right through your WLAN Broadband Router, suggest that use security mechanism like WEP, WPA or set ID/password for web configuration login IP address 192.168.1.254.

### Preparation

- 1 At least one PC with IEEE802.11b/g WLAN client installed.
- 2 One straight-through Category 5 Ethernet cable, used to link WAN interface to xDSL or CM for Internet connection.
- 3 WLAN Broadband Router.

Check package contents:

- ✓ WLAN Broadband Router
- ✓ DC 7.5V Power Adapter
- ✓ User's manual CD-ROM
- ✓ 1.8M RJ-45 Cable Line

Collect Installation Information:

WAN configuration (Contact your ISP or network administrator for these information)

**DHCP Client**

**Static IP**

<b>IP Address</b>	<input type="text"/> . <input type="text"/> . <input type="text"/> . <input type="text"/>
<b>Subnet Mask</b>	<input type="text"/> . <input type="text"/> . <input type="text"/> . <input type="text"/>
<b>Default Gateway</b>	<input type="text"/> . <input type="text"/> . <input type="text"/> . <input type="text"/>
<b>DNS Address</b>	<input type="text"/> . <input type="text"/> . <input type="text"/> . <input type="text"/>

**PPPoE**

<b>User Name</b>	<input type="text"/>
<b>Password</b>	<input type="text"/>

**PPTP**

<b>IP Address</b>	<input type="text"/> . <input type="text"/> . <input type="text"/> . <input type="text"/>
<b>Subnet Mask</b>	<input type="text"/> . <input type="text"/> . <input type="text"/> . <input type="text"/>
<b>Server IP Address</b>	<input type="text"/> . <input type="text"/> . <input type="text"/> . <input type="text"/>
<b>User Name</b>	<input type="text"/>
<b>Password</b>	<input type="text"/>

## Quick Installation Guide of WLAN Broadband Router

### LAN configuration

<b>IP Address</b>	<input style="width: 100%;" type="text"/>
<b>Subnet Mask</b>	<input style="width: 100%;" type="text"/>

### WLAN configuration

<b>SSID</b>	<input style="width: 100%;" type="text"/>
<b>Mode</b>	<input style="width: 100%;" type="text"/>
<b>Channel Number</b>	<input style="width: 100%;" type="text"/>

### Parts and Functions of WLAN Broadband Router:

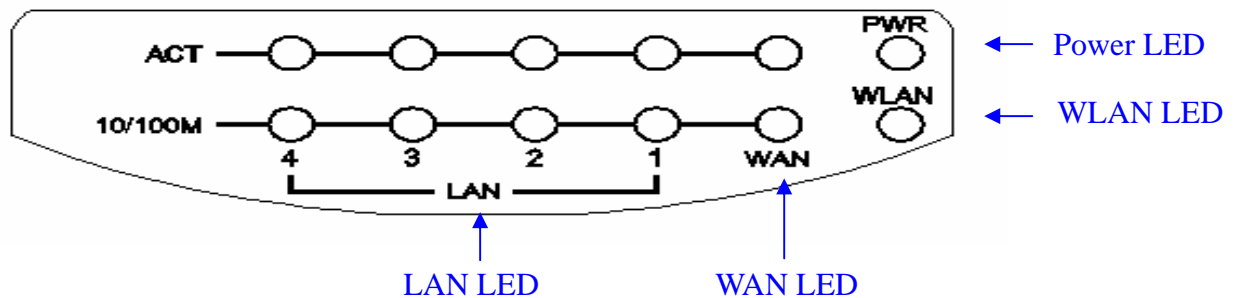


Figure 1 – WLAN Broadband Router Front Panel

LED Indicator	State	Description	
1. Power LED	On	WLAN Broadband Router is powered on.	
	Off	WLAN Broadband Router is powered off.	
2. WLAN LED	Flashing	Data is transmitting or receiving on the antenna.	
	Off	No data is transmitting or receiving on the antenna.	
3. WAN LED	ACT	Flashing	Data is transmitting or receiving on the WAN interface.
		Off	No data is transmitting or receiving on the WAN interface.
	10/100M	On	Connection speed is 100Mbps on WAN interface.
		Off	Connection speed is 10Mbps on WAN

## Quick Installation Guide of WLAN Broadband Router

		interface.
4. LAN LED		
ACT	Flashing	Data is transmitting or receiving on the LAN interface.
	Off	No data is transmitting or receiving on the LAN interface.
10/100M	On	Connection speed is 100Mbps on LAN interface.
	Off	Connection speed is 10Mbps on LAN interface.

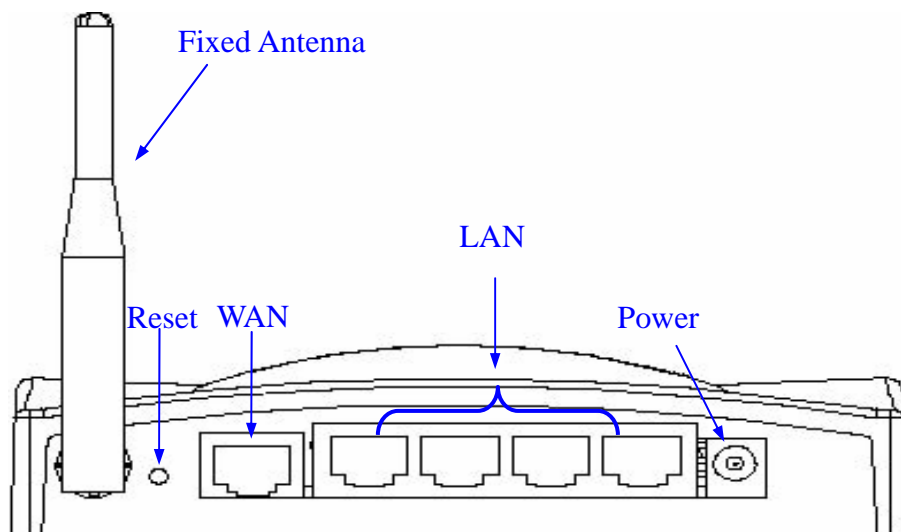


Figure 2 – WLAN Broadband Router Rear Panel – Fixed Antenna

## Quick Installation Guide of WLAN Broadband Router

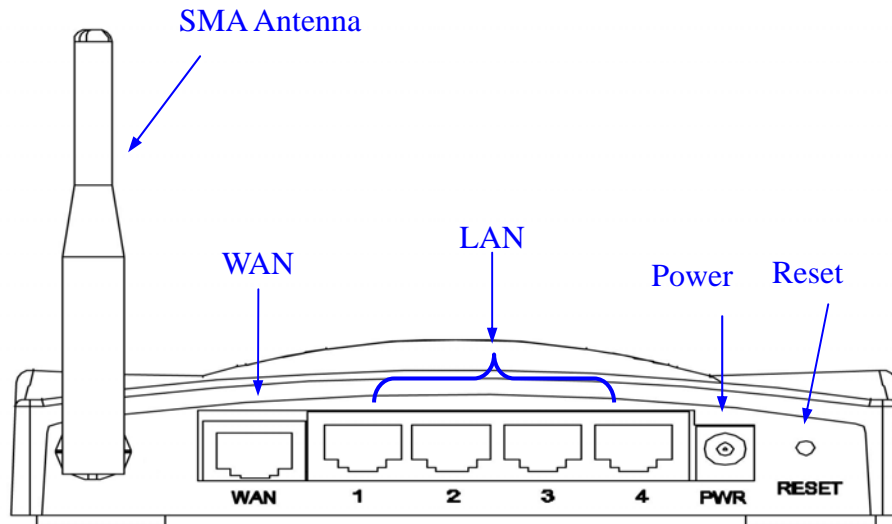


Figure 2.1 – WLAN Broadband Router Rear Panel – SMA Antenna

Interfaces	Description
1. Antenna (Fixed / SMA)	The Wireless LAN Antenna. (Figure2 / Figure 2.1)
2. Reset	Push continually the reset button 5 seconds to reset the configuration parameters to factory defaults.
3. WAN	The RJ-45 socket allows WAN connection through a Category 5 cable. Support auto-sensing on 10/100M speed and half/ full duplex; comply with IEEE 802.3/ 802.3u respectively.
4. LAN	The RJ-45 sockets allow LAN connection through Category 5 cables. Support auto-sensing on 10/100M speed and half/ full duplex; comply with IEEE 802.3/ 802.3u respectively.
5. Power	The power socket allows an external DC 7.5V power supply connection.

# Quick Installation Guide of WLAN Broadband Router

## Installation

### Step One – Power On WLAN Broadband Router

Connect DC 7.5V Power Adapter to WLAN Broadband Router and the wall power socket.

**Notice: It will take about 55 seconds to complete the boot up sequence after powered on the WLAN Broadband Router; Power LED will be active, and after that the WLAN Activity LED will be flashing to show the WLAN interface is enabled and working now.**

### Step Two – Configure WLAN Broadband Router

#### 1. Connect your PC to LAN port for configuration setting

WLAN Broadband Router is delivered with the following factory default parameters on the Ethernet LAN interfaces.

- Default IP Address: **192.168.1.254**
- Default IP subnet mask: **255.255.255.0**
- WEB login User Name: *<empty>*
- WEB login Password: *<empty>*
- Configure your PC with IP address between 192.168.1.1 to 192.168.1.253 and subnet mask to be 255.255.255.0, then open an Internet browser (i.e. Microsoft IE6.1 SP1 or above) to connect WLAN Broadband Router by entering <http://192.168.1.254> to URL field.

The screenshot displays the web interface of a WLAN Broadband Router. The page title is "Broadband Router Status". Below the title, a message states: "This page shows the current status and some basic settings of the device." The interface is organized into several sections, each with a green header:

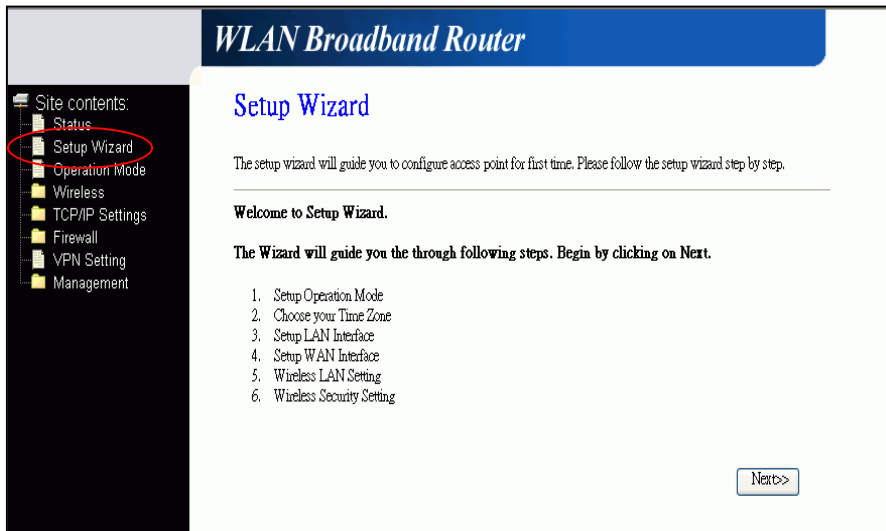
- System**
  - Uptime: 0day:0h:15m:26s
  - Firmware Version: v1.2.0
- Wireless Configuration**
  - Mode: AP
  - Band: 2.4 GHz (G)
  - SSID: MyWLAN
  - Channel Number: 11
  - Encryption: Disabled
  - BSSID: 00:02:72:00:81:86
  - Associated Clients: 1
- TCP/IP Configuration**
  - Attain IP Protocol: Fixed IP
  - IP Address: 192.168.1.254
  - Subnet Mask: 255.255.255.0
  - Default Gateway: 192.168.1.254
  - DHCP Server: Enabled
  - MAC Address: 00:02:72:00:81:86
- WAN Configuration**
  - Attain IP Protocol: DHCP
  - IP Address: 192.168.0.136
  - Subnet Mask: 255.255.255.0
  - Default Gateway: 192.168.0.10
  - MAC Address: 00:02:72:00:81:87

A navigation menu is visible on the left side of the page, listing options such as Site contents, Status, Setup Wizard, Operation Mode, Wireless, TCP/IP Settings, Firewall, VPN Setting, and Management.

# Quick Installation Guide of WLAN Broadband Router

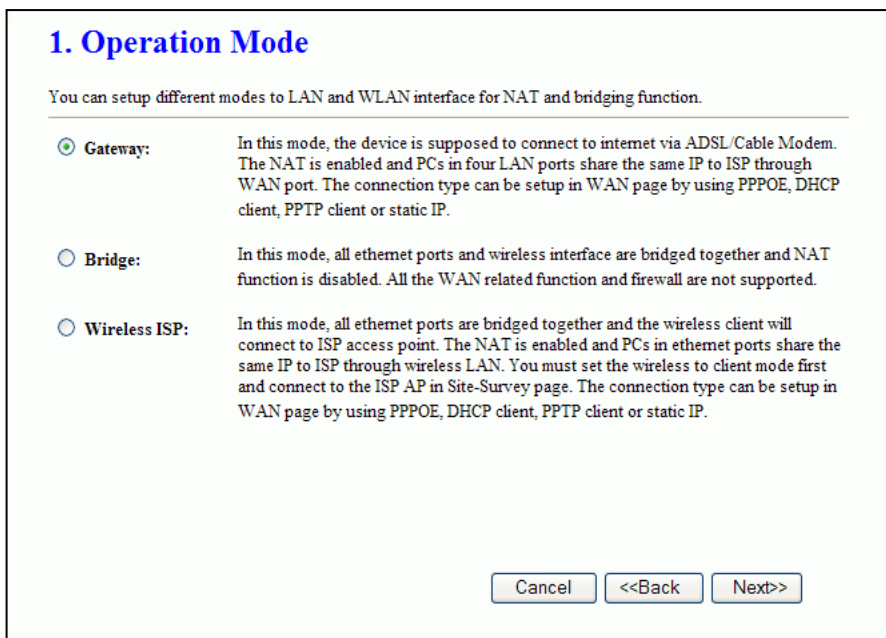
The following example is to configure router as “Gateway” mode that use factory default value. You may change those values if you think that is necessary.

2. Click “Setup Wizard” in submenu of Site contents



- Click “Next>>” button to go next.

3. Configure Operation Mode



- Click “Gateway”.
- Click “Next>>” button to go next.

# Quick Installation Guide of WLAN Broadband Router

## 4. Configure Time Zone Setting configuration

**2. Time Zone Setting**

You can maintain the system time by synchronizing with a public time server over the Internet.

Enable NTP client update

Time Zone Select : (GMT+08:00)Taipei

NTP server : 192.5.41.41 - North America

Cancel <<Back Next>>

- Click “Next>>” button to go next.

## 5. Configure LAN Interface Setup

**3. LAN Interface Setup**

This page is used to configure the parameters for local area network which connects to the LAN port of your Access Point. Here you may change the setting for IP address, subnet mask, DHCP, etc..

IP Address: 192.168.1.254

Subnet Mask: 255.255.255.0

Cancel <<Back Next>>

- IP Address:  
192.168.1.254.
- Subnet Mask:  
255.255.255.0.
- Click “Next>>” button to go next.

## 6. WAN Interface Setup

**4. WAN Interface Setup**

This page is used to configure the parameters for Internet network which connects to the WAN port of your Access Point. Here you may change the access method to static IP, DHCP, PPPoE or PPTP by click the item value of WAN Access type.

WAN Access Type: DHCP Client

Cancel <<Back Next>>

- WAN Access Type: Select WAN connection of ISP provides.
- ◇ WAN Options:  
Static IP, PPPoE, PPTP
- Click “Next>>” button to go next.

# Quick Installation Guide of WLAN Broadband Router

## 7. Wireless Basic Settings

**5. Wireless Basic Settings**

This page is used to configure the parameters for wireless LAN clients which may connect to your Access Point.

Band: 2.4 GHz (G) ▾

Mode: AP ▾

Network Type: Infrastructure ▾

SSID: MyWLAN

Channel Number: 11 ▾

Enable Mac Clone (Single Ethernet Client)

Cancel <<Back Next>>

- Band: 2.4GHz(G)
- Mode: AP
- Network Type: disabled
- SSID: MyWLAN
- Channel: 11
- Enable Mac Clone: disabled
- Click “Next>>” button to go next.

## 8. Wireless Security Setup

**6. Wireless Security Setup**

This page allows you setup the wireless security. Turn on WEP or WPA by using Encryption Keys could prevent any unauthorized access to your wireless network.

Encryption: None ▾

Cancel <<Back Finished

- Encryption: None
- ◇ Options:  
WEP, WPA (TKIP),  
WPA2 (AES), WPA2  
Mixed
- Click “Finished” button to close setup session.

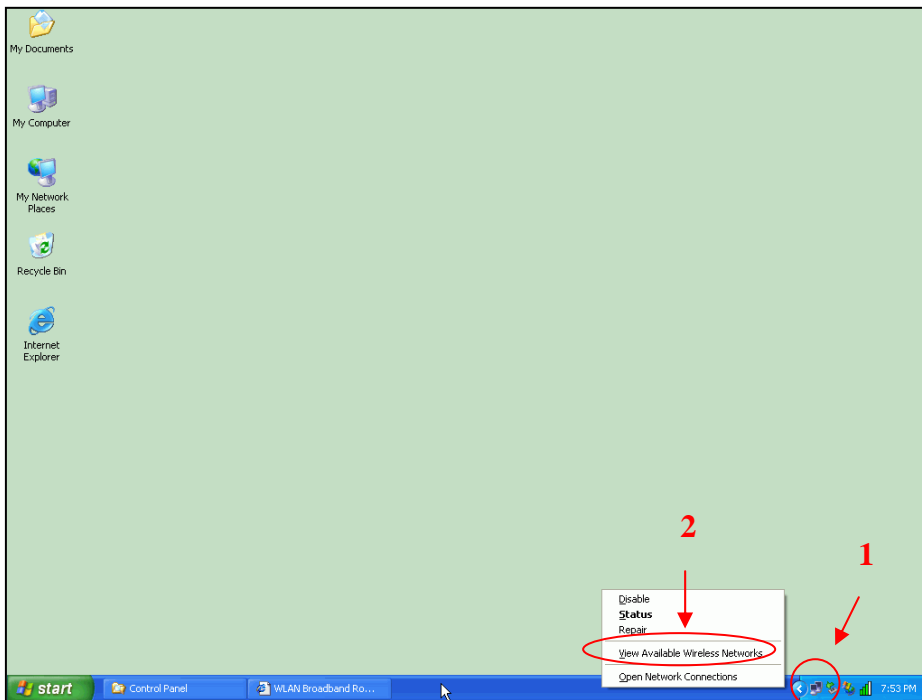


# Quick Installation Guide of WLAN Broadband Router

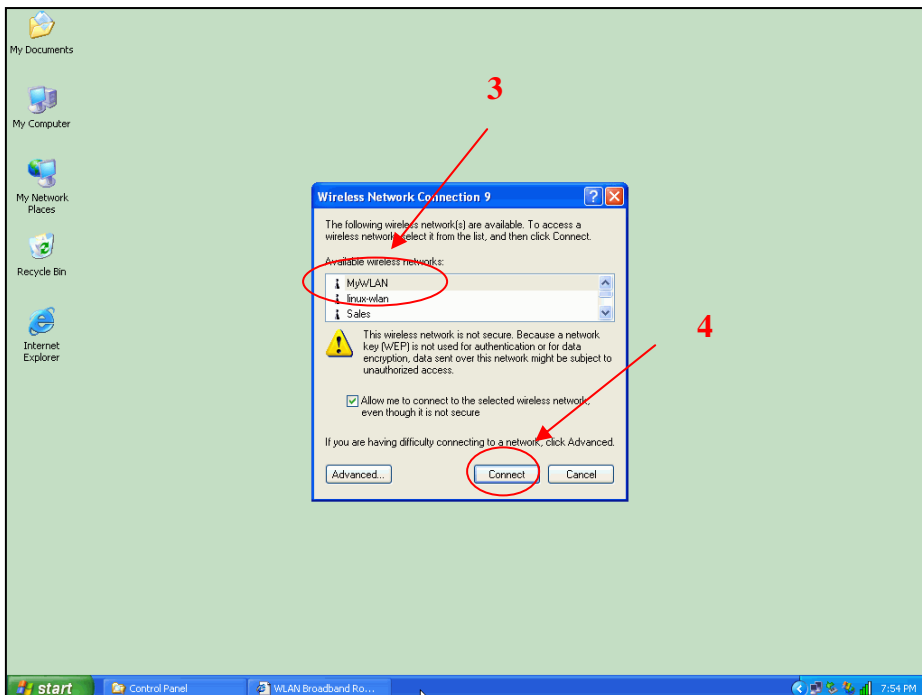
## Step Three – Connect WLAN client to WLAN Broadband Router wirelessly

On your wireless client PC:

1. Move your mouse to the Network icon on the Task bar and right click the mouse button to bring up the pop-up menu.
2. Click the View Available Wireless Networks on the pop-up menu.

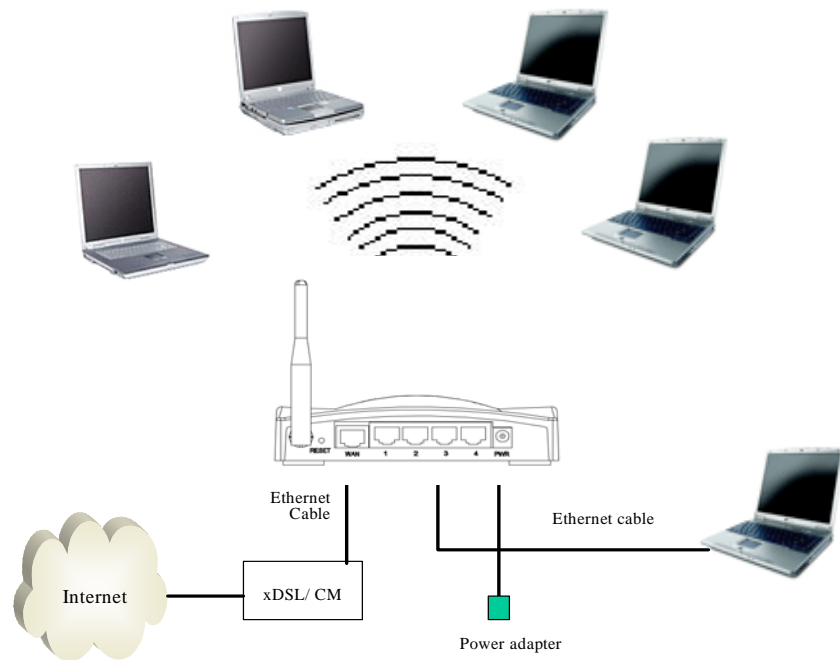


3. Select the specific WLAN network (SSID) from the Available Networks list.



4. Click the Connect button to establish the communication link to the wireless network

## Quick Installation Guide of WLAN Broadband Router



The wireless network diagram of WLAN Broadband Router..

### *Reference*

Please consult the user's manual of WLAN Broadband Router for detailed and complete operation guide.

# Quick Installation Guide of WLAN Broadband Router

---

## One Year Limited Warranty

- This device is guaranteed against manufacturing defects for one full year from the original date of purchase.
- This warranty is valid at the time of purchase and is non-transferable.
- This warranty must be presented to the service facility before any repair can be made.
- Sales slip or other authentic evidence is required to validate warranty.
- Damage caused by accident, misuse, abuse, improper storage, and/or uncertified repairs is not covered by this warranty.
- All mail or transportation costs including insurance are at the expense of the owner.
- Do not send any product to service center for warranty without a RMA (Return Merchandise Authorization) and proof of purchase. Ensure a trackable method of delivery is used (keep tracking number).
- Warranty is valid only in the country of purchase.
- We assume no liability that may result directly or indirectly from the use or misuse of these products.

### **IMPORTANT**

**"This warranty will be voided if the device is tampered with, improperly serviced, or the security seals are broken or removed"**